

I 100 Series

Introduction

The Racor I 100 Series features a variety of compact sizes to fit the most cramped engine compartments. All units feature 1/4"-18 NPTF inlet and outlet fuel ports and a unitized mounting bracket (except the I 40R which may be hard piped and supported by the piping).

Elements

All I 100 Series assemblies feature spin-on, high-capacity, Aquabloc®II replaceable filter elements which stop water, remove solid contamination, and are available in 2, 10, and 30 micron (model I 10A is a cartridge element and is available with a 10 micron element only). Filtration needs should be based on application, fuel quality, operating climates, and maintenance schedules.



I 10A



I 20A

Clear Bowls

All units feature spin-on contaminant collection bowls. The clear bowls used with these models will not discolor from alcohol, additives, or UV light and have a leak-proof, positive seal drain for easy servicing (except the I 10A). Water and contamination levels can be seen easily at a glance.

Options

I 100 Series optional accessories include: water detection kits, vacuum or compound gauges and metal bowls. Metal bowls should be specified when filtering fuels in hazardous locations where equipment is exposed to flying gravel and debris.



I 20B



I 40R



Parker Hannifin Corporation
Racor Division, PO Box 3208
Modesto, CA 95354 USA
Phone: 800.344.3286
Fax: 209.529.3278
E-mail: racor@parker.com
www.parker.com/racor

RACOR®

Mobile Fuel Filtration

I 00 Series



Specifications	I 10A	I 20A	I 20B	I 40R
Maximum Flow Rate: (with diesel fuel) (with gasoline)	15 GPH (57 LPH) 35 GPH (132 LPH)	15 GPH (57 LPH) N/A	20 GPH (76 LPH) N/A	15 GPH (57 LPH) N/A
Port Size: (SAE J476)	¼"-18 NPTF	¼"-18 NPTF	¼"-18 NPTF	¼"-18 NPTF
Total Number of Ports: (total inlets) (total outlets)	4 2 2	4 2 2	4 2 2	2 1 1
Minimum Service Clearance	2.0 in. (5.1 cm)	2.0 in. (5.1 cm)	2.0 in. (5.1 cm)	2.0 in. (5.1 cm)
Center Threads	N/A	M18 x 1.5	M18 x 1.5	M18 x 1.5
Height	6.0 in. (15.2 cm)	6.5 in. (16.5 cm)	8.0 (20.3 cm)	6.0 in. (15.2 cm)
Depth	3.3 in. (8.4 cm)	3.2 in. (8.1 cm)	3.2 in. (8.1 cm)	3.2 in. (8.1 cm)
Width	3.2 in. (8.1 cm)	3.2 in. (8.1 cm)	3.2 in. (8.1 cm)	3.2 in. (8.1 cm)
Weight (dry)	1.3 lb (0.59 kg)	1.1 lb (0.50 kg)	1.2 lb (0.54 kg)	1.1 lb (0.50 kg)
Clean Pressure Drop	0.15 PSI (0.01 bar)	0.15 PSI (0.01 bar)	0.15 PSI (0.01 bar)	0.01 PSI (0.0007 bar)
Max. Allowable Pressure¹	100 PSI (6.9 bar)	7.0 PSI (0.48 bar)	7.0 PSI (0.48 bar)	7.0 PSI (0.48 bar)
Available Options:² (water sensor probe) (heater)	Yes No	Yes No	Yes No	No No
Water in Bowl Capacity	1.2 oz. (36 ml)	1.8 oz. (52 ml)	1.8 oz. (53 ml)	1.8 oz. (53 ml)
H₂O Removal Efficiency	99%	99%	99%	99%
Operating Temperature	-40° to +255°F (-40° to +123°C)			

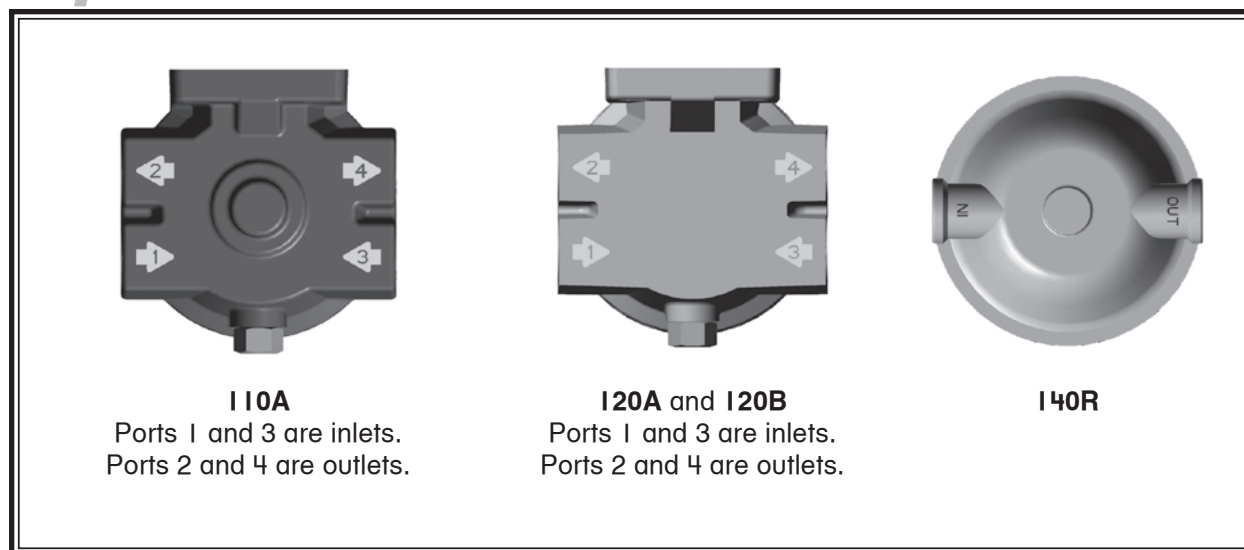
Special Notes: ¹ Pressure installations are applicable up to maximum PSI shown. Vacuum installations are recommended. ² Not for use with gasoline applications.

RACOR®

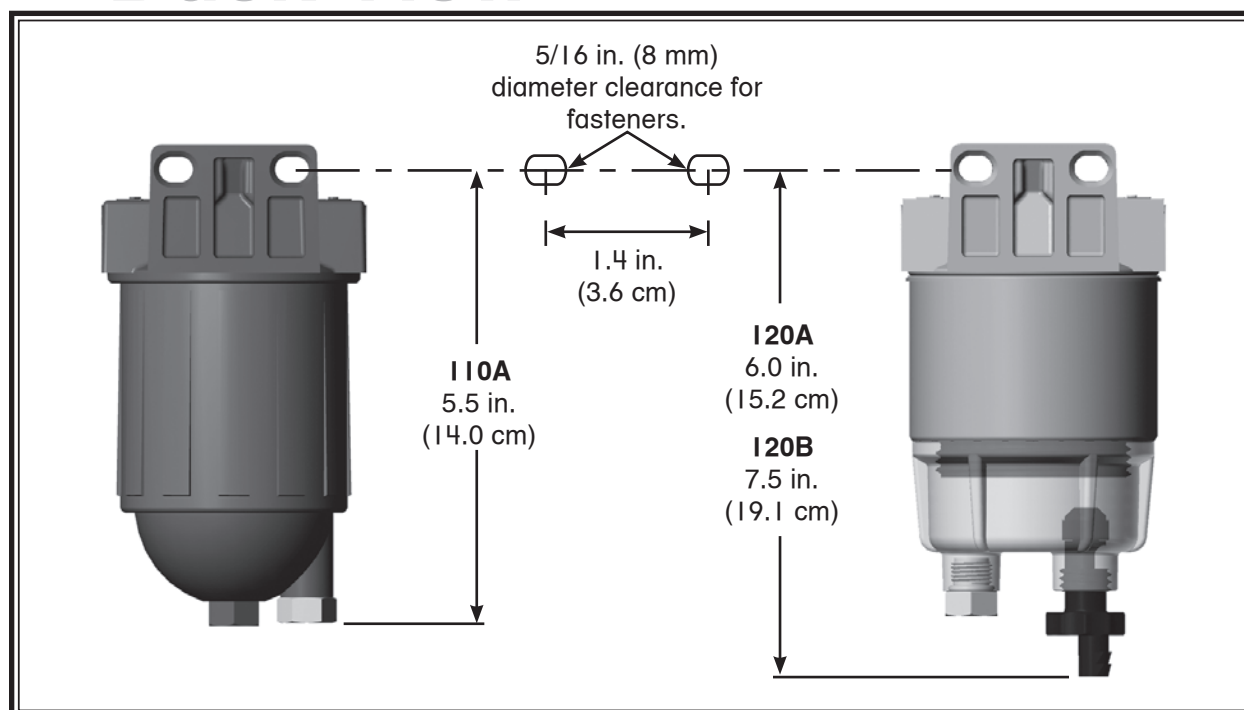
Technical Support:
800.344.3286 ext. 7555
racortech@parker.com

I 00 Series

Top View



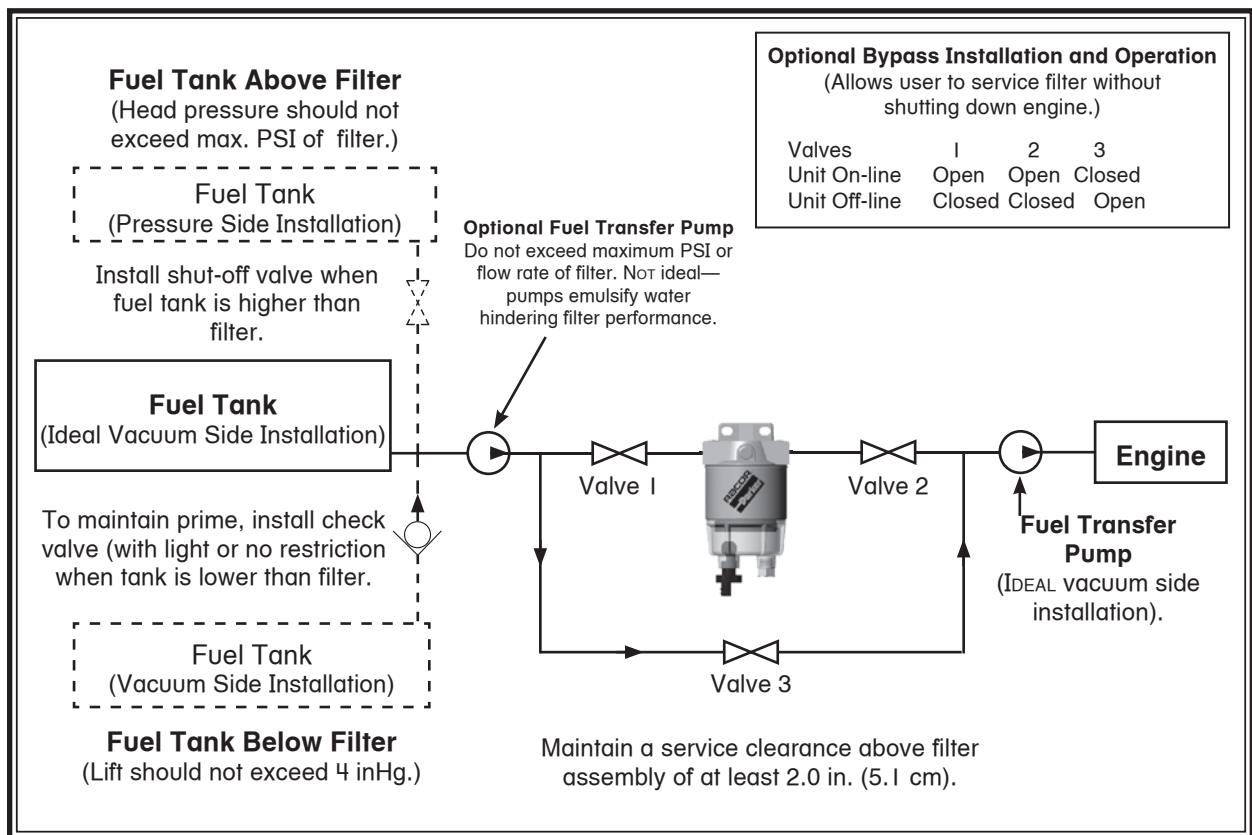
Back View



Mobile Fuel Filtration

I 00 Series

Installation Diagram



Installation diagram applies to all I 00 Series filters. Model I 20A shown above. Racor offers hose and fittings to complete this installation—see Accessories.

RACOR

Technical Support:
800.344.3286 ext. 7555
racortech@parker.com

I 00 Series

Installation

Note: exercise great caution when installing a I 00 Series fuel filter/water separator to avoid a fire hazard. Do not smoke, or allow any open flame or excessive heat which could ignite a fire. Perform installation in a well ventilated area.

Refer to mounting instructions and installation diagram and install as follows:

1. Make sure engine is off and cool to touch.
2. Apply thread sealant to 1/4" NPTF fittings.

Warning: do not use thread tape as particles may break off and contribute to clogging element. Also, tape particles on outlet side of filter will jam or foul injectors.

3. Thread fittings into appropriate fuel ports and tighten snugly. Plug unused ports, if any, with port plugs and tighten snugly.
4. Mount filter vertically in a protected area and away from heat sources. Maintain at least 2 in. (5.1 cm) of clearance below filter for servicing.
5. Attach fuel lines to filter. Avoid tight bends and rubbing areas when routing fuel hose.
6. Follow priming instructions on next page.

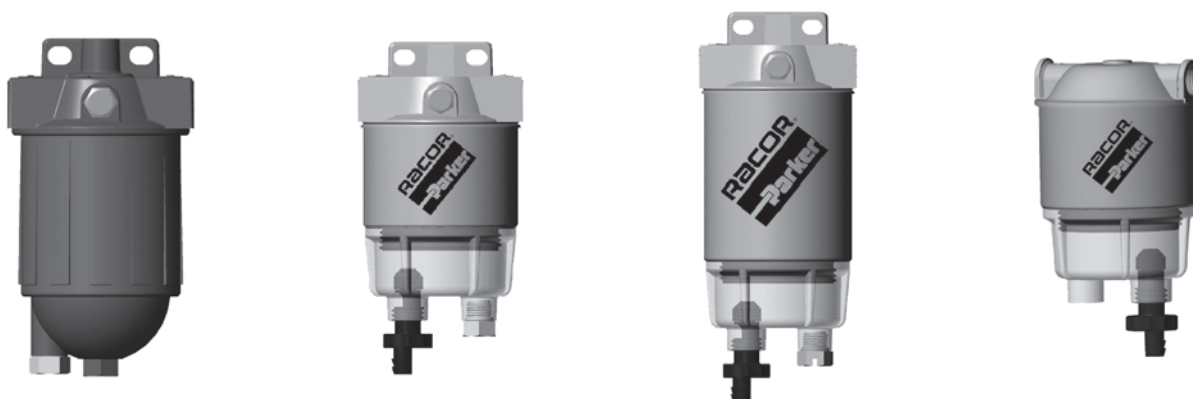
Service

Element replacement frequency is determined by contamination level in fuels. Fuel flow to engine becomes restricted as element gradually plugs with contaminants, resulting in noticeable power loss and/or hard starting. As a guideline, change element every 500 hours, 10,000 miles, every other oil change, annually, or at first indication of power loss, whichever occurs first. Always carry extra replacement elements as one tankful of excessively dirty fuel can quickly plug a filter.

1. Make sure engine is off and cool to touch.
2. Close all fuel valves, if applicable, to ensure excess fuel does not spill during servicing.
3. Open vent plug on mounting head, if applicable.
4. Drain unit of fuel.
5. Remove bowl and element. Dispose of element properly. Bowl is reusable.
6. Lubricate new element seals with motor oil or clean fuel and install new element.
7. Re-install bowl and tighten by hand only - do not use tools.
8. Close vent plug, if applicable and tighten snugly.
9. Open all fuel valves, if applicable.
10. Follow priming instructions on the next page.

Mobile Fuel Filtration

I 00 Series



Draining

Water is heavier than fuel and will settle to bottom of bowl and appear different in color if collected in a clear jar. In high humidity environments, check bowl frequently (daily if a poor fuel source is suspected). I 00 Series bowls are equipped with a water sensor port that accepts a water probe (sold separately) and alerts operator of a high water condition in the filter (except I 40R—no water probe port available).

Warning! Do NOT use water probe electronics in gasoline applications—an explosion could occur.

1. Make sure engine is off and cool to touch.
2. Open vent plug, if applicable.
3. Drain water from filter by opening self-venting drain (I 10A users: remove probe plug). Close as soon as all water has evacuated. **Note:** if drain is open too long, the entire filter assembly may drain completely of water *and* fuel.
4. Close and tighten vent plug snugly.
5. Follow priming instructions.

Priming

1. Remove bowl and element together, and fill with clean fuel.
2. Re-install bowl and element.
3. Verify all other connections are tight.
4. Start engine and check for leaks. Correct as necessary with engine off.

Trouble Shooting

If a I 00 Series filter fails to hold prime, first check vent plug, drain plug, fittings and head/element/ bowl are properly tightened. Next, check fuel line connections and verify that they are free of pinches or unnecessary bends and check to see if fuel tank strainer (or pick-up tube) is clogged. If problems persist and element is new, call Racor Technical Support at 1.800.344.3286 ext. 7555.

RACOR®

Technical Support:
800.344.3286 ext. 7555
racortech@parker.com

I 00 Series

Replacement Parts

I 10A

- | Part No. | Description |
|--------------------------------------|---|
| 1. RK21361 | Head Kit (includes #'s 2 and 3)
(1/4"-18 NPTF Ports) |
| 2. RK10110 | Metal Vent Plug Kit
(3/8"-24 UNF) |
| 3. RK21363 | Gasket/O-ring Kit |
| 4. Replacement Element (includes #3) | |
| RIIS | 2 Micron |
| RIIT | 10 Micron |
| 5. RK21364 | Housing Kit
(includes #'s 5 and 6) |
| 6. RK20022 | Metal Plug Kit
(1/2"-20 UNF) |

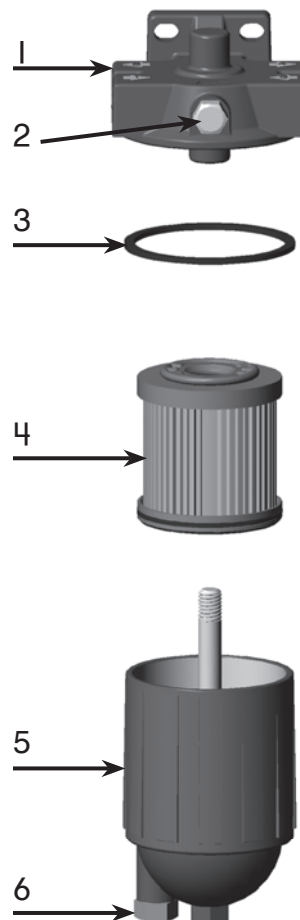
Additional Parts (not shown)

RK30964¹ Water Probe

RK30817 Port Plug Kit
(2 plugs per kit)

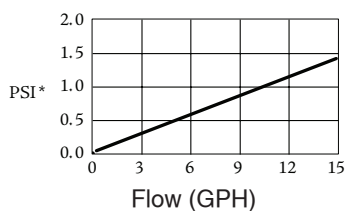
21410 Installation Instructions

¹ Do not use on gasoline applications. Water probe must be used with a water detection module—see Accessories.

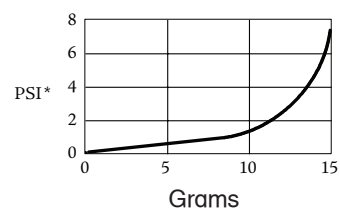


Test Data

(Test results are from controlled laboratory testing. Field results may vary.)



SAE J905 Fuel Flow Restriction



SAE J905 Solids Capacity
(using SOFTC-2A; RIIT Element)

PSI X 2.036 = inHg. / PSI X 6.895 = kPa

Mobile Fuel Filtration

I 00 Series

How To Order

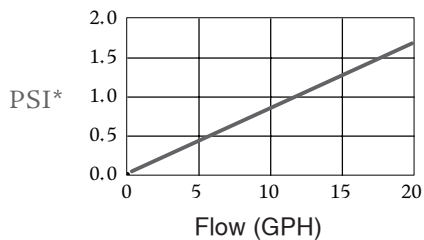
(The example below shows how a part number is constructed.)

I 20A	S
Specify a model: I 20A for 15 GPH (57 LPH) I 20B for 20 GPH (76 LPH)	Specify a micron rating: S for 2 micron T for 10 micron P for 30 micron

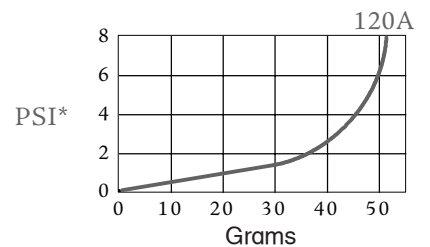


I 20B

Test Data



SAE J905 Fuel Flow Restriction



SAE J905 Solids Capacity
(using SOFTC-2A; R12T Element)

$$\text{PSI} \times 2.036 = \text{inHg} / \text{PSI} \times 6.895 = \text{kPa}$$

(Test results are from controlled laboratory testing. Field results may vary.)

RACOR®

Technical Support:
800.344.3286 ext. 7555
racortech@parker.com



I00 Series

Replacement Parts

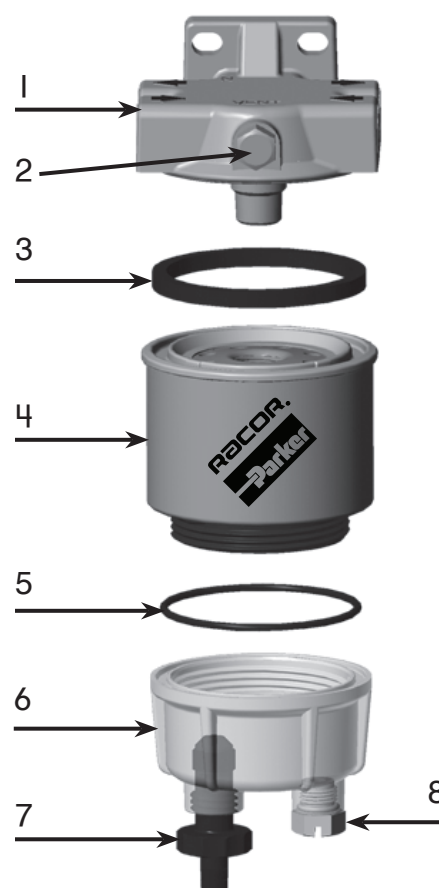
I20A and I20B

<u>Part Number</u>	<u>Description</u>
1. RK10214	Mounting Head Kit (1/4"-18 NPTF ports)
2. RK10110	Metal Vent Plug Kit (3/8"-24 SAE threads)
3. RK10503	Head Gasket Kit
4. Replacement Element (includes #'s 3 and 5)	
R12S	I20A: 2 micron
R12T	I20A: 10 micron
R12P	I20A: 30 micron
R13S	I20B: 2 micron
R13T	I20B: 10 micron
R13P	I20B: 30 micron
5. RK10012	Bowl O-ring Kit
6. RK10215	Clear Bowl Kit
7. RK30476	Self-venting Drain Kit
8. RK20126	Plastic Plug Kit (1/2"-20 SAE threads)

Additional Parts (not shown)

RK30964¹	Water Probe Kit
RK10109	Metal Bowl Kit
I0219	Installation Instructions

¹ Do not use on gasoline applications. Water probe must be used with a water detection module—see accessories.



Mobile Fuel Filtration

I00 Series

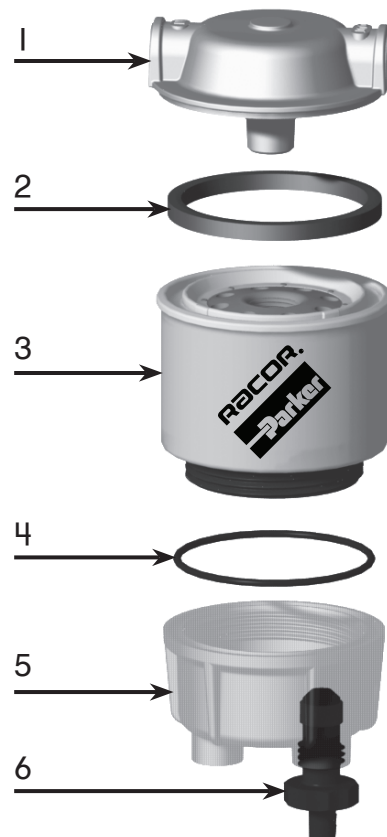
Replacement Parts

I40R

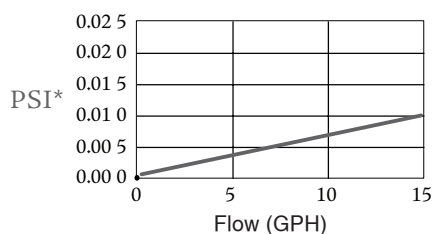
- | Part Number | Description |
|---|---|
| 1. RK10177 | Mounting Head Kit
(1/4"-18 NPTF ports) |
| 2. RK10503 | Head Gasket Kit |
| 3. Replacement Element (includes #'s 2 and 4) | |
| RI2S | 2 micron |
| RI2T | 10 micron |
| RI2P | 30 micron |
| 4. RK10012 | Bowl O-ring Kit |
| 5. RK10215 | Clear Bowl with Drain Kit |
| 6. RK30476 | Self-venting Drain Kit |

Additional Parts (not shown)

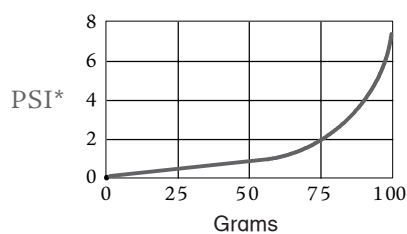
10192 Installation Instructions



Test Data



SAE J905 Fuel Flow Restriction



SAE J905 Solids Capacity
(using SOFTC-2A; RI2T Element)

$$\text{PSI} \times 2.036 = \text{inHg} / \text{PSI} \times 6.895 = \text{kPa}$$

(Test results are from controlled laboratory testing. Field results may vary.)

RACOR®

Technical Support:
800.344.3286 ext. 7555
racortech@parker.com